

InterPuls Orbiter Claws



1539072



1569004



1549026

Orbiter Claw from InterPuls features a bowl with deep oval shape for better flow pattern. The large well-balanced rubber bumper provides protection against bumps and scrapes during take-off. The clear bowl is made of durable, high-impact, transparent, lightweight poly material. Orbiter Claws are available for side-to-side or front-to-rear pulsation. Wt. 1.1 lbs.

1539084 Stainless Steel Top Orbiter Claw, 350cc. capacity. 1/2"OD milk inlet. 5/8"ID milk outlet. For front/rear pulsation. Includes shut-off valve.

1539072 Stainless Steel Top Orbiter Claw, 350cc. capacity. 1/2"OD milk inlet. 5/8"ID milk outlet. For side to side pulsation. Includes shut-off valve.

1549012 Stainless Steel Top Orbiter Claw, 250cc capacity. 1/2"OD milk inlet. 5/8"ID milk outlet. For side to side pulsation. Includes shut-off valve.

1559004 Plastic Top Orbiter Claw, 240cc capacity, 1/2"OD milk inlet. 5/8"ID milk outlet, for side to side pulsation.

1569002 Plastic Top Orbiter Claw, 340cc capacity, 1/2"OD milk inlet. 5/8"ID milk outlet, for side to side pulsation.

1569004 Plastic Top Orbiter Claw, 340cc capacity, 1/2"OD milk inlet. 5/8"ID milk outlet, for front to rear pulsation.

REPLACEMENT PARTS:

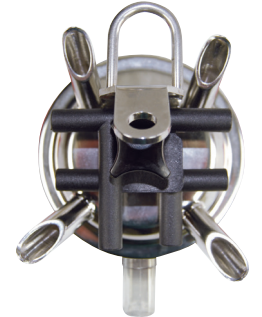
- 1 **1540022** Stem w/ hanger for 240/250
- 1 **1530191** Stem w/ hanger for 340/350
- 2 **1530189** Distributor for side/side
- 2 **1530193** Distributor for front/rear
- 1550006** Black plastic top part
- 3 **1530068** Small gasket
- 4 **1530150** Bowl gasket
- 5 **1530014** Shut-off
- 6 **1540003** 250cc Bowl only
- 6 **1530148** 350cc Bowl only
- 6 **1530164** 350cc Bowl only without hole
- 6 **1550011** 240cc Bowl only
- 6 **1560002** 340cc Bowl only
- 7 **1530016** Shut-off lock
- 8 **1530152** Knurled nut



Coburn® Westfalia-Style Claw



149100 and 149101 Top View



149200 and 149201 Top View

Westfalia-style Claw has polished stainless steel top, polysulfone (PSU) bowl and includes a 9/32" air divider for front/rear pulsation and a 3/4" milk outlet. If another air divider is desired, see options in REPLACEMENT PARTS below.

149100 300cc Westfalia-Style Claw with Shut-off.

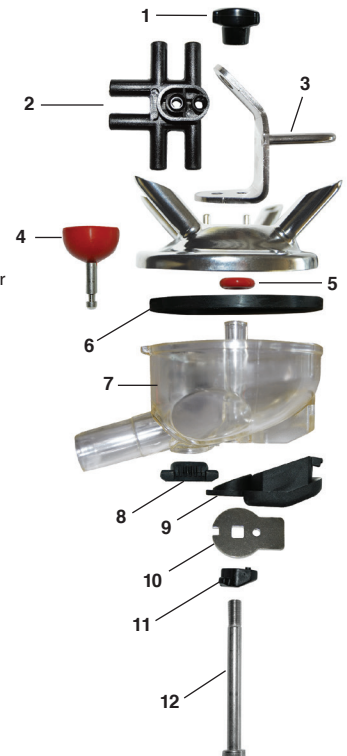
149101 300cc Westfalia-Style Claw without Shut-off.

149200 300cc Westfalia-Style Close Nipple Claw with Shut-Off. Wt. 1.2 lbs.

149201 300cc Westfalia-Style Close Nipple Claw without Shut-Off. Wt. 1.2 lbs.

REPLACEMENT PARTS:

- 1 **149112** Lock knob
- 2 **149113** Plastic Air divider front/rear
- **149114** Plastic Air divider side/side
- **140324** S.S. Air divider front/rear
- **140320** S.S. Air divider side/side
- 3 **149115** S.S. top bracket
- 4 **149106** Rubber Shut-off w/stem
- 5 **149103** O-Ring
- 6 **149102** Claw bowl gasket
- 7 **149104** Bowl with hole
- **149105** Bowl without hole
- 8 **149107** Rubber shut-off lock
- 9 **149108** Rubber bung
- 10 **149109** S.S. Base Plate
- 11 **149110** Plastic lower bracket
- 12 **149111** S.S. Long screw



The Coburn Company, Inc. • P O Box 147 • Whitewater, WI 53190 U.S.A.

800 776 7042

262 473 2822

coburn.com

info@coburn.com



Top Unloading Claw

Top Unloading Claw allows the milk to begin exiting almost immediately which helps maintain vacuum stability. Constructed of 3/8" stainless steel, Top Unloading Claw features quality workmanship and superior finish.

Extra large capacity and large outlet make for easier milk flow while the tall styling eliminates swirling and breaks up flow for smoother evacuation of milk. Barrel depth is 3-3/4" and window O.D. measure 3-3/16". Claw features highly polished stainless steel construction with standard beveled inlets and invisible welds. Capacity is 328 cc (20 cu.in.). Replacement windows and gaskets are the same as for California Claw.

- 183605** Top Unloading Claw, 5/8" outlet, plastic plug included. Wt. 1.5 lbs.
- 183605P** Top Unloading Claw, 5/8" outlet parallel style, plastic plug included. Wt. 1.5 lbs.
- 183606** Replacement Plastic Plug for 5/8" outlet claws.
- 183607** Top Unloading Claw, 3/4" outlet, plastic plug included. Wt. 1.5 lbs.
- 183607P** Top Unloading Claw, 3/4" outlet, parallel style, plastic plug included. Wt. 1.5 lbs.
- 183608** Replacement Plastic Plug for 3/4" outlet claws.
- 8053** Rubber Claw Pad for 183605 (does not fit 183605P).



183605



183605P

5/8" or 3/4" ID Outlet

- REPLACEMENT PARTS:**
- 144101** Window (also fits Germania).
 - 144102** Gasket (also fits Germania).
 - 144103** Backflush Clip (also fits Germania).



California Claws

California Claw is constructed of highly polished 3/8" stainless steel with standard beveled inlets and invisible welds. Quality workmanship and superior stainless finish makes this the best claw of its style on the market.

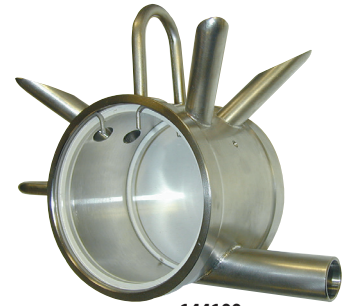
Extra large capacity and large outlet make for easier milk flow. Tall styling eliminates swirling and breaks up flow for smoother evacuation of milk out of the Claw. Backflush clip, gaskets and windows included.

SPECIFICATIONS	Barrel Depth	Window OD	Capacity
144100 & 144100P	2-3/4"	3-3/16"	230 cc (14 cu.in.)
144134 & 144134P	3-1/2"	3-3/16"	324 cc (20 cu.in.)

- 144100** California Claw with 5/8" ID outlet. Wt. 1.2 lbs.
- 144100P** California Claw with 5/8" ID outlet for parallel stalls. Wt. 1.2 lbs.
- 144134** California Claw with 3/4" ID outlet. Wt. 2 lbs.
- 144134P** California Claw with 3/4" ID outlet for parallel stalls. Wt. 1.4 lbs.
- 6080** Rubber Claw Pad for 144100 (does not fit 144100P).
- 8054** Rubber Claw Pad for 144134 (does not fit 144134P).



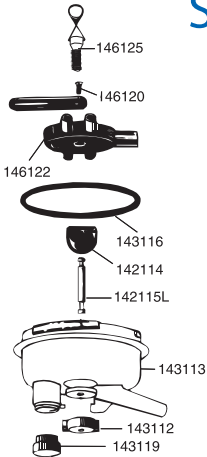
144100P



144100

- REPLACEMENT PARTS:**
- 144101** Window (also fits Germania).
 - 144102** Gasket (also fits Germania).
 - 144103** Backflush Clip (also fits Germania).

Replacement Super Claw Parts

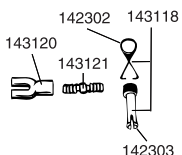


REPLACEMENT PARTS for Super Claws:

- ***143112** Shut-off lock
- ***143113** Claw bowl
- ***142114** Rubber shut-off
- ***142115L** Long shaft
- 143115** Bowl gasket (thin for D/L)
- ***143116** Bowl gasket (thick)
- ***143119** Rubber bumper
- 146120** S.S. screw (top)
- 146122** Plastic air divider
- 146125** Knurled screw w/ ring

- 143113C** Repair Kit
- * Included in Repair Kit, one each.

REPLACEMENT PARTS for Old-Style Super Claws:



- 142302** S.S. ring for Super Claw
- 142303** Vent plug w/ groove
- 142303N** Vent plug w/o groove
- 143118** Vent with ring
- 143120** Y-Adapter
- 143121** Y-Adapter insert



DeLaval-Style Standard Claw

The larger inside dimension on Coburn's DeLaval-style Claw provides increased capacity for better operation. Extended front nipples match cows' udder shape for proper hanging of the claw. The enlarged bowl allows less chance for vacuum fluctuations on the fastest milking cows. Bowl is made of Grilamid TR55—a transparent polymer known for durability, clarity, long life, stability under heat and hydrolysis resistance.

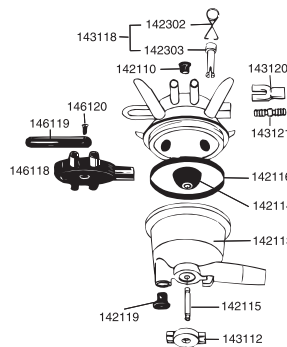
Parts are completely interchangeable with original DeLaval. Replacing with our Claw Bowl with its larger 5/8" outlet can virtually eliminate drop-off due to flooding on DeLaval claws, while increasing capacity. Rubber bumper gives additional bowl protection and new tapered outlet nipple allows easier hose attachment. These claws were developed for twin pulsation, but we can also supply adapters for converting to single pulsation.

- 142111** DeLaval-Style Claw. Capacity 180cc (11 cu.in.) Wt. 2 lbs.



REPLACEMENT PARTS:

- 142110** Rubber vent for Standard Claw
- ***142113** Claw bowl
- ***142114** Rubber shut-off plug
- ***142115** S.S. Shaft
- ***142116** Gasket
- ***142119** Rubber bumper
- 142302** S.S. ring (optional) for Std. Claw
- 142303** Plastic vent plug with groove (opt.)
- 142303N** Plastic vent plug without groove (opt.)
- ***143112** Shut-off lock
- 143118** Vent w/ ring (optional) for Std. Claw
- 143120** Y-Adapter (optional)
- 143121** Y-Adapter insert (optional)
- 146118** Air fork for Lightweight Claw
- 146119** Wash loop for Lightweight Claw
- 146120** Screw for wash loop
- 142113C** Repair Kit
- * Included in Repair Kit. One of each.



The Coburn Company, Inc. • P O Box 147 • Whitewater, WI 53190 U.S.A.

800 776 7042

262 473 2822

coburn.com

info@coburn.com